



European Research Council ERC - Starting Grants

Salim Chehab
EU-Bureau of the BMBF
National Contact Point ERC

FORSCHUNG

Ideen zünden!



Topics

- Part I: Basic Principles and rules
 - What makes the ERC special?
 - What kind of Grants?
 - Who is eligible to apply?
- Part II: Preparing a Starting Grant Application
 - Proposal Structure
 - Evaluation
 - Do's & Dont's & Nice to Have
 - Important documents & websites
 - Statistics



National Contact Point ERC in Germany



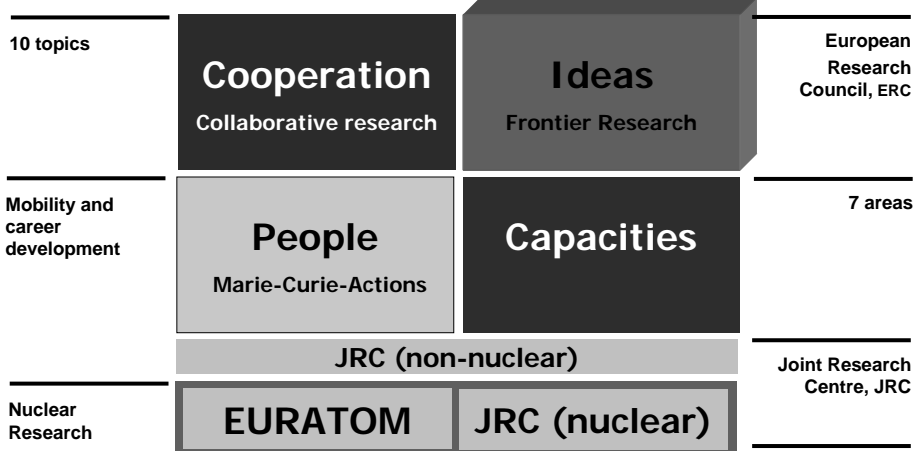
- A collaboration of EU-Bureau of the Federal Ministry of Education and Research (BMBF) and the German Research Foundation (DFG)
- Providing individual advice in all questions concerning the ERC application
- Rendering legal and financial information with regard to grant preparation and project management
- Organisation of workshops and information events

Deutsche
Forschungsgemeinschaft
DFG

Web: www.nks-erc.de



7th Research Framework Programme - Structure





Excellence as sole criterion

Frontier Research

Investigator-driven

European Research Council



Ground Breaking

“Bottom-Up”

High risk & High gain

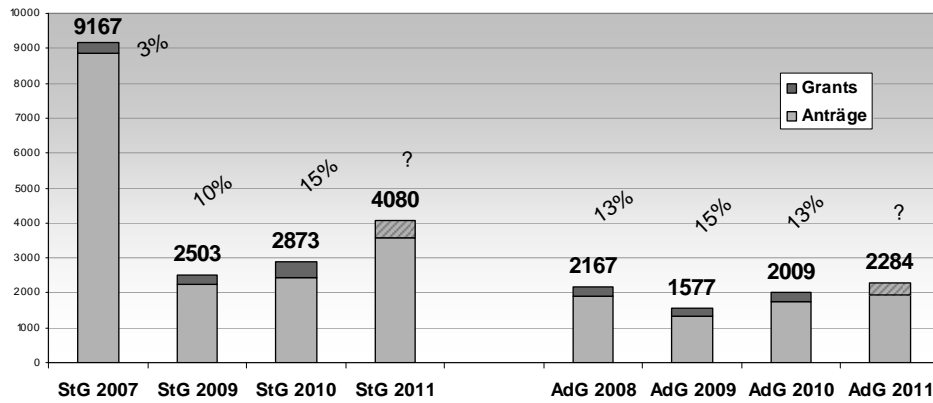
All research fields



ERC Funding Schemes

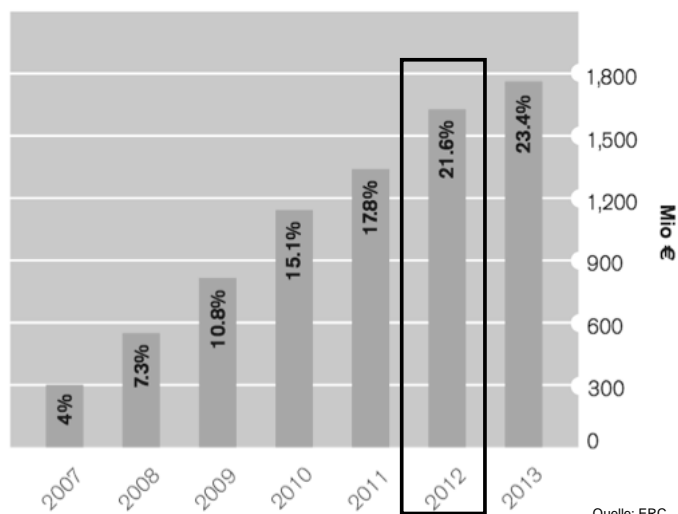
	Starting Grants	Advanced Grants	Synergy Grants <small>new!</small>	Proof of Concept
Target Group	1 scientist, 2-12 years after PhD	1 established scientists	2-4 (established) scientists	StG/AdG Grantees only!
Project Duration	Max 5 years	Max 5 years	Max 6 years	Max 1 year
Project Budget	Max 1.5 Mio. € (excp. 2 Mio.€)	Max 2.5 Mio. € (excp. 3.5 Mio.€)	Max 15 Mio. €	Max 150.000 €
Total Call Budget 2012	730 M€	680 M€	150 M€	10 M€

Submissions and success rates of previous Calls



ERC-Budget

2007- 2013



Bottom-Up

- All fields of science, all topics
- 3 scientific domains with pre-defined budget:
 - Physical Sciences & Engineering (PE) – 44%
 - Life Sciences (LS) – 39%
 - Social Sciences and Humanities (SH) – 17%

StG: Profile of the Principle Investigator (PI)

- **Any nationality or age**
- **Any current place of work** – but: working or moving to work in Europe (EU member state, Associated Country)
- **2-12 years of experience after PhD**
 - Date on PhD certificate → publication of the Call (20th July 2011)
 - Certain career breaks are accepted up to a maximum of 16 ½ years, i.e.
 - birth of children (female researcher): 18 months per child
 - paternity leave: exact number of days taken
 - military service after PhD
 - long-term illness after PhD

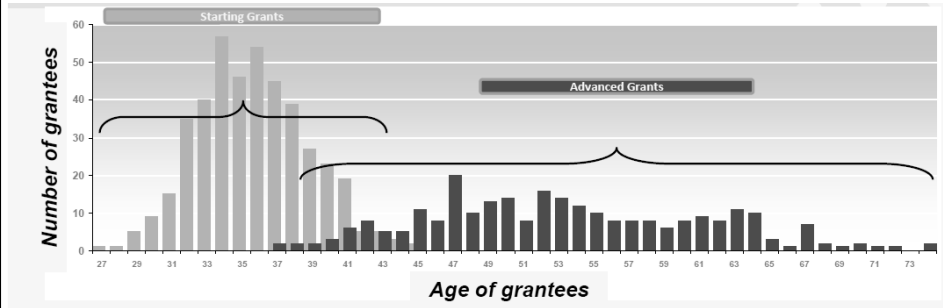
PhD equivalence for Medical Doctors

- The degree “Dr. med.” is treated as an MD degree (no PhD equivalence!)
- Applicants need to provide in addition to their Dr. med. / MD degree:
 - a) PhD **or**
 - b) completion of clinical specialty training **or**
 - c) proof of an appointment that requires doctoral equivalency (i.e. post-doctoral fellowship, professorship appointment)
- Eligibility window: 4 -14 years after Dr. med. / MD
- In case of PhD (in addition to MD): the date of PhD award takes precedence in the calculation of the eligibility time-window (2-12 years after PhD)
- Additionally: information on research experience (including peer reviewed publications) in CV

Profile of the Principle Investigator (PI)

- **Potential for research independence and evidence of maturity**
 - at least **one important publication** without participation of PhD supervisor
 - **Track-record of early research achievements** appropriate to their research field and career stage
 - **Career stages may vary: “Starters”** (2-7 years after PhD) and **“Consolidators”**(7-12 years after PhD) will be evaluated in different groups
- Devotion of at least **50% of working time** to the ERC project

Age of Starting and Advanced Grantees



Seventh Framework Programme (FP7) | Search all CORDIS

Project details are published on CORDIS after the negotiation and the signature of the grant agreement between the European Commission and the beneficiaries. This follows the publication of [calls for proposals](#) and the selection procedure where they are selected by the European Union to be partly financed by the Commission.

Search Projects:

Enter search term(s): **„Find a Project“ on CORDIS:**

http://cordis.europa.eu/fp7/projects_en.html

Theme*:
 FP7-HEALTH
 FP7-ICT
FP7-IDEAS
 FP7-INCO
 FP7-INFRASTRUCTURES

* Keep the control key pressed to make more than one selection

Activity*:
 ERC - ERC
 ERC-AG - Advanced Grants
 ERC-EPS - Exploratory and preparatory studies
 ERC-OA - Other activities

* Keep the control key pressed to r

Country*:
 Any Country
 AUSTRIA
 BELGIUM
 BULGARIA
 CYPRUS
 CZECH REPUBLIC
 DENMARK

Sort order:
 Most recent first

Search Clear

Find names and abstracts

Annotations:

- Select: FP7-IDEAS
- Select StG/AdG and panel
- Select country of Host



Team

- The PI can compose the team according to project needs
- Team members can be of any nationality or career stage
- Team members are normally employed at the same institution; in exceptional cases **additional institution(s)** in:
 - 27 EU Member States
 - Associated Countries
 - Third Countries

An ERC-Team is not a consortium!
You don't have "partners"



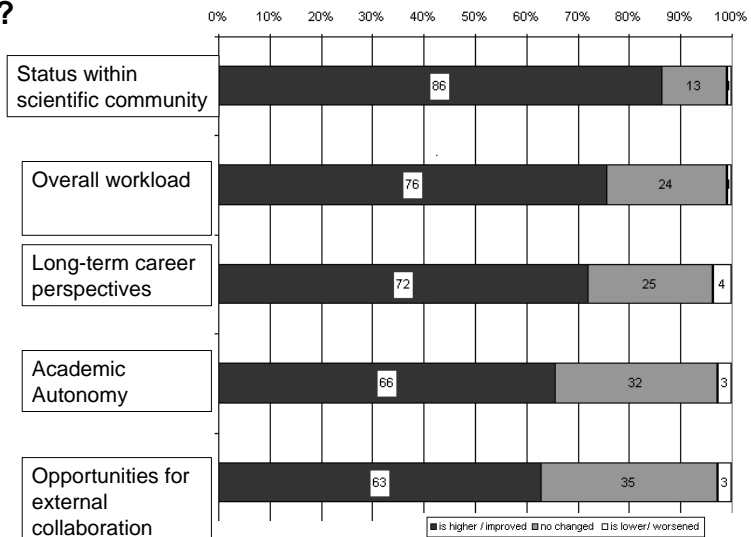
Calls 2011- 2012

	Starting Grants 2012	Advanced Grants 2012	Synergy Grants 2012
Publication of Call	20 July 2011	16 November 2011	25 October 2011
Deadlines			
Physical Sciences and Engineering	12 October 2011	16 February 2012	25 January 2012
Life Sciences	9 November 2011	14 March 2012	
Social Sciences and Humanities	24 November 2011	11 April 2012	

Why apply?

Preliminary results of a survey of ERC Grantees (Starting Grant 2009) by project MERCI (n = 110).

Question : Have there been any changes in your working situation after receiving the Starting Grant. 5 points scales 1 = is much lower, 5 is much higher. Here categories (1,2) and (4,5) combined.



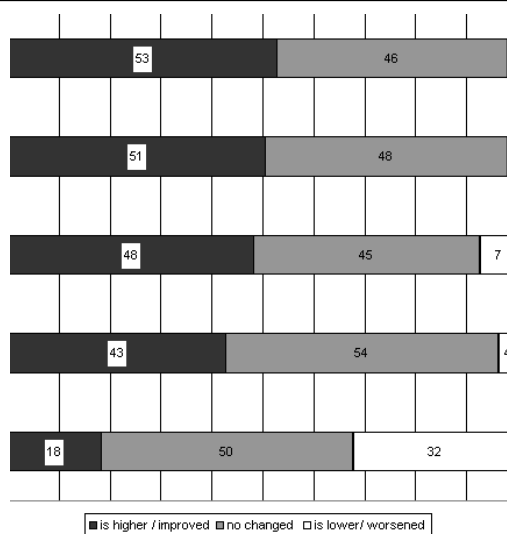
Access to qualified research staff

Access to research equipment

Remuneration

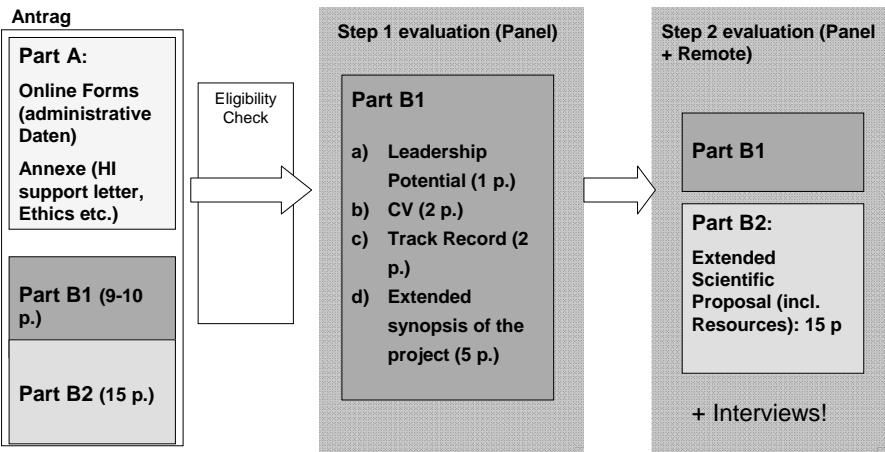
Job security

Work-life balance



Preliminary results of a survey of ERC Grantees (Starting Grant 2009) by project MERCI (n = 110).

Starting Grants: Application & Evaluation



Max. admitted to Step 2: panel budget x 3

NATIONALE KONTAKTSTELLE ERC



Stefanie Schelhowe

Telefon: 0228 3821-1629
E-Mail: stefanie.schelhowe@dlr.de

Nicole Schröder

Telefon: 0228 3821-1658
E-Mail: nicole.schroeder@dlr.de

Marion Korres

Telefon: 0228 3821-1643
E-Mail: marion.korres@dlr.de

Salim Chehab

Erstinformation und Newsletter:
Monika Schuler

Telefon: 0228 3821-1633
E-Mail: monika.schuler@dlr.de

Deutsche
Forschungsgemeinschaft



Dr. Annette Doll-Sellen

Telefon: 0228 885-2923
E-Mail: annette.doll-sellen@dfg.de

Dr. Georg Düchs

Telefon: 0228 855-2838
E-Mail: georg.duechs@dfg.de

Philip Thelen

Telefon: 0228 855-2663
E-Mail: philip.thelen@dfg.de

Internet: www.nks-erc.de